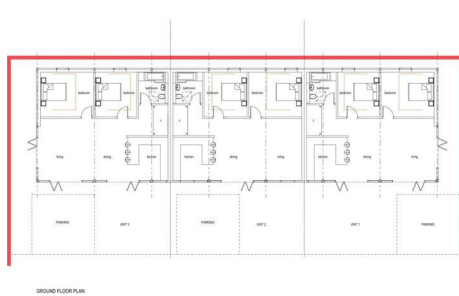




ANDERSON-DIXON



Glass Lane

Abbots Bromley, Rugeley, WS15 3AX

This is a fantastic opportunity to acquire a prime residential development site at Gilleons Hall Farm, situated in the idyllic rural outskirts of Abbots Bromley, Staffordshire. This unique offering includes planning permission for the conversion of existing agricultural buildings into a selection of x5 high-quality residential dwellings, making it an exciting prospect for developers, investors, or those looking for a countryside project with huge potential.

East Staffordshire
Application: P/2024/00172
Decision Date: 25/04/2024

£750,000



Glass Lane

Abbots Bromley, Rugeley, WS15 3AX

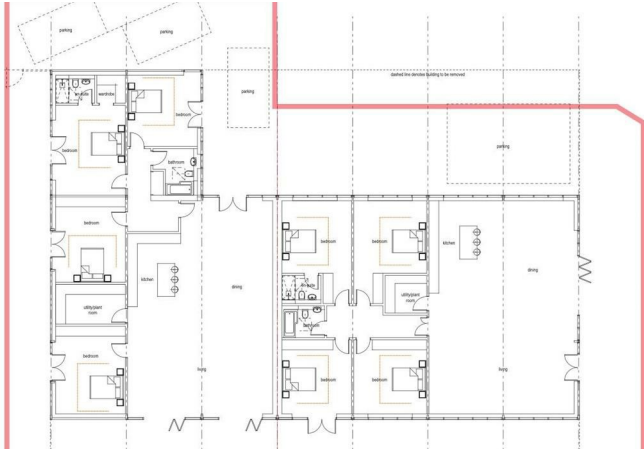


Units 1-3

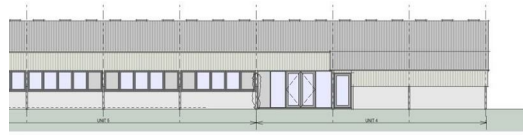
Units 4-5



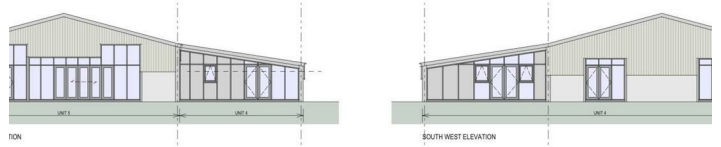
Directions



P/2024/00172
Received 16/02/2024



SECTION



SECTION

SOUTH WEST ELEVATION



Floor Plan

These particulars, whilst believed to be accurate are set out as a general outline only for guidance and do not constitute any part of an offer or contract. Intending purchasers should not rely on them as statements of representation of fact, but must satisfy themselves by inspection or otherwise as to their accuracy. No person in this firms employment has the authority to make or give any representation or warranty in respect of the property.

Energy Efficiency Rating		
	Current	Potential
Very energy efficient - lower running costs		
(92 plus) A		
(81-91) B		
(69-80) C		
(55-68) D		
(39-54) E		
(21-38) F		
(1-20) G		
Not energy efficient - higher running costs		
England & Wales	EU Directive 2002/91/EC	