



ANDERSON-DIXON



THE OLD BARN Sinai Park

Burton-On-Trent, Burton-On-Trent, DE13 0QJ

Abode Estate Agents are delighted to offer for sale this stunning detached barn conversion, set within an exclusive gated development adjacent to the historic Sinai House. Occupying a prime position on elevated ground, the property enjoys outstanding panoramic views across the beautiful surrounding countryside and beyond.

Originally converted by the highly regarded Cameron Homes—renowned for their premium rural developments—this exceptional residence is nestled within generous, mature gardens and offers an outstanding blend of traditional charm and contemporary elegance.

Approached via electric gates, the property enjoys a spacious block-paved driveway leading to a superb detached triple car barn with an integrated workshop. Additionally, planning permission has been granted for the construction of a further garage and store (Planning Ref: P/2022/00026 – available to view via the East Staffordshire Planning Portal).

£950,000

THE OLD BARN Sinai Park

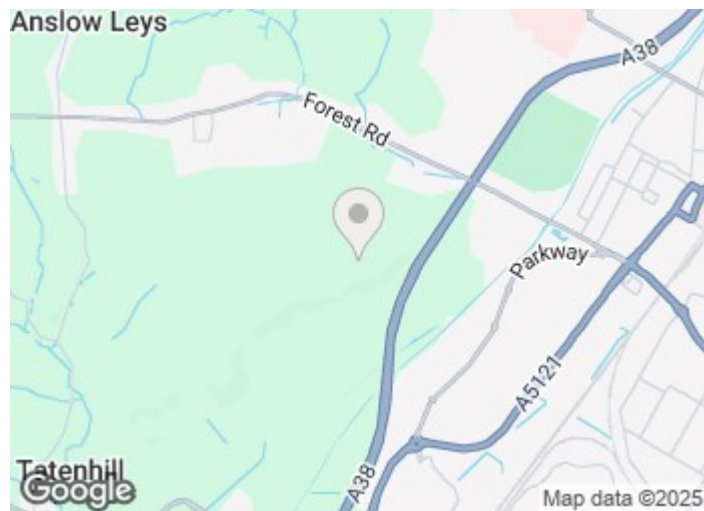
Burton-On-Trent, Burton-On-Trent, DE13 0QJ



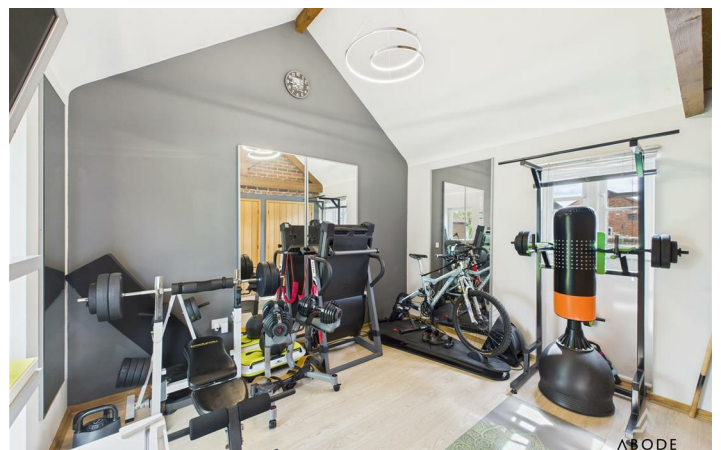
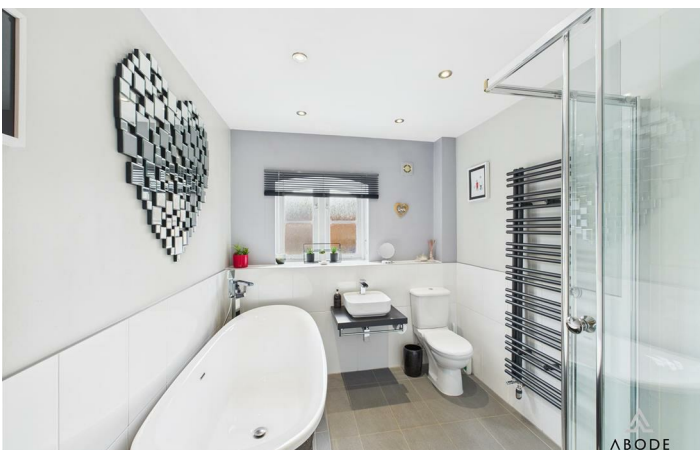
Description

Agents Notes

Additional Information



Directions



Floor Plan



These particulars, whilst believed to be accurate are set out as a general outline only for guidance and do not constitute any part of an offer or contract. Intending purchasers should not rely on them as statements of representation of fact, but must satisfy themselves by inspection or otherwise as to their accuracy. No person in this firm's employment has the authority to make or give any representation or warranty in respect of the property.

